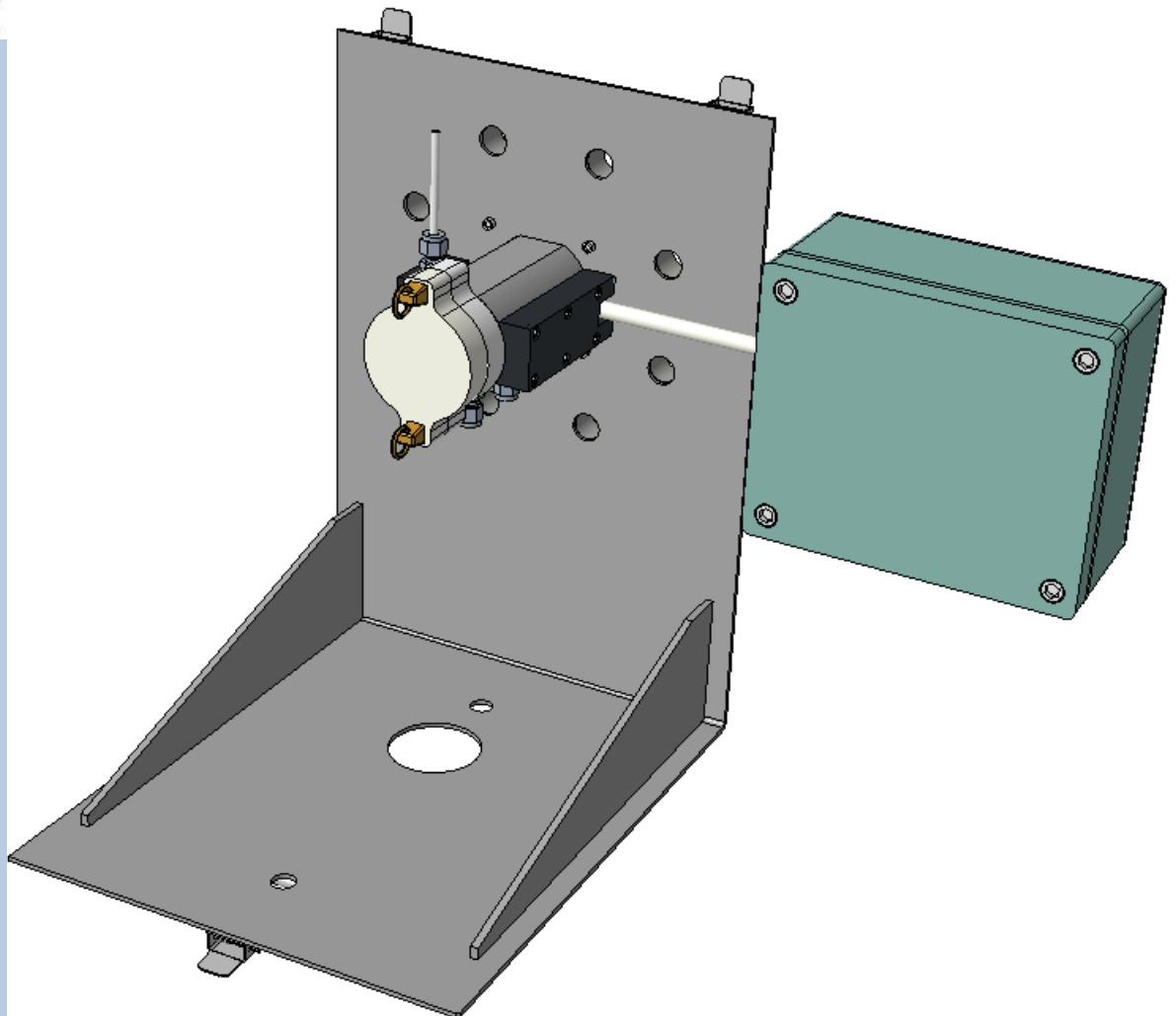


GFUTEC

GHP-100

Gas Sample Heated Probe



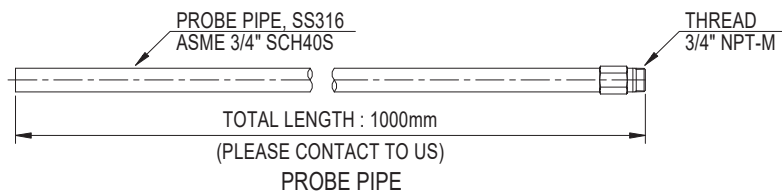
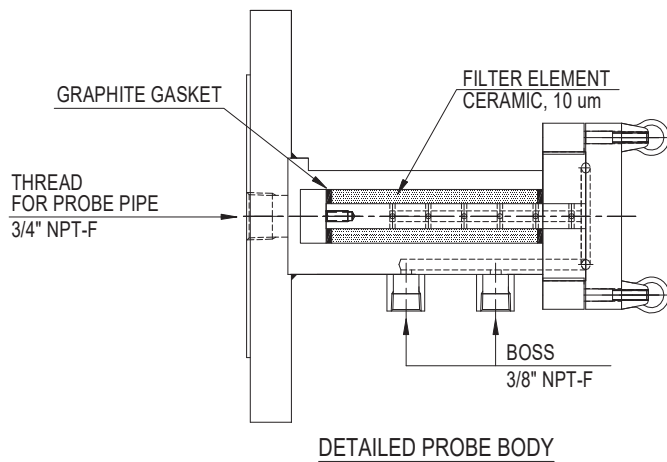
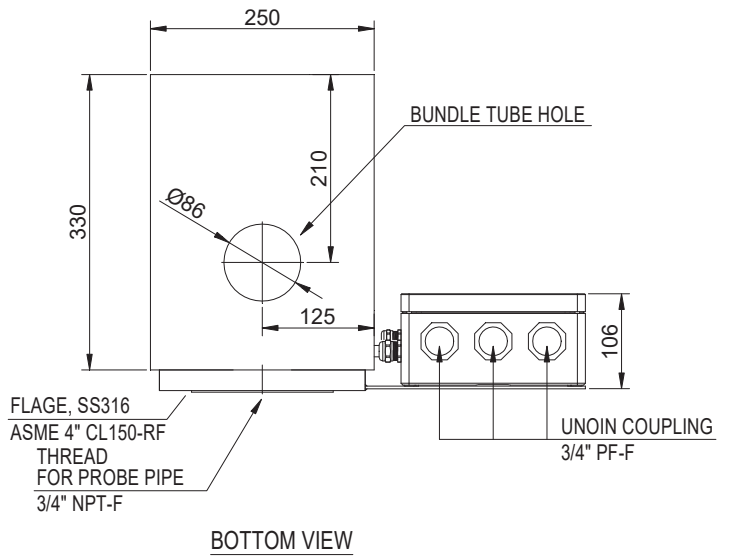
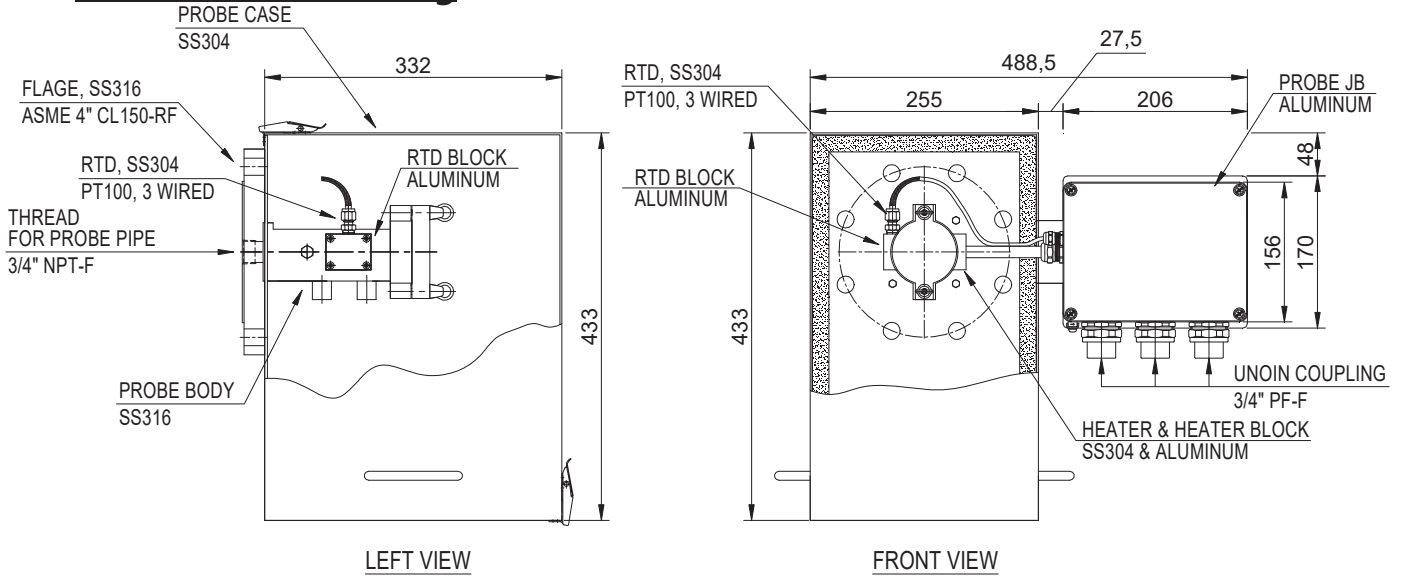
APPLICATION

- Representative continuous gas sampling in processes containing dust and humidity
- Extractive gas analysis
- Emission (CEMS) and process monitoring
- Removal of dust from the sample gas

FEATURE

- Large active filter surface
- Filter from outside to inside gas path
- Filter element change without special tools
- RTD Sensor for Temp. Control
- Rain & Sunlight protection housing
- Various options and upgrades (Contact to us)

Dimensional Drawing



SPECIFICATION

Model	GHP-100
Description	Gas Sample Heated Probe
OPERATION DATA	
Temperature	Max. 200°C
Pressure	Max. 5 barg
PHYSICAL DATA	
Case Material	Stainless Steel 304
Probe Material	Stainless steel 316
Filter Material	Ceramic 10um with Graphite gasket
Probe Insulation	Insulation Jacket Included
Case Insulation	EPDM 19.0t
Mounting	ASME 4" CL150-RF FLANGED MOUTING
Gas Connection	3/8" NPT-F x 2 port
ELECTRICAL DATA	
Consumption	Approx. 300W
Heater	220Vac,1ph,60Hz
Temp. Sensor	RTD, PT-100 3wired
Terminal Box	Aluminum(ALDC12.1) IP66 to IEC 60529

© **Contact us for other specification**